

IQBoard IT

User Manual



Copyright(C) 2003-2009 Returnstar Technology Co., Ltd.

Web: www.recoverystar.com; www.iqboard.net

Tel: +86-591-83385086, 87274373

Fax: +86-591-87274383

E-mail: master@recoverystar.com

Important Statements

This manual is for IQBoard IT.

Use this product strictly according to detailed operation instruction in this manual so as to ensure proper use. Before you install this product, please read this manual carefully to save your time.

Opening the package means you have agreed to purchase this product, Returnstar will not accept returns of opened packages.

The product specification may be subject to change without prior notice. The sample pictures in this User Manual may differ from the real product.

Returnstar reserves all rights to charge the fee at anytime for product replacement, revision and update. The content in this manual will be regularly revised without prior notice, and the printed manual will be updated when new version is released. Returnstar will make no guarantee for this product, both explicit and implicit, including the salability and the adaptability to certain purpose, and will deny all guarantees alike.

Copyright

Returnstar, IQBoard are registered trademarks of Returnstar Technology Co., Ltd. Window is a registered trademark of Microsoft.

Environment Protection

When discarding this electronic device, please don't treat it as normal trash. To minimize the pollution and protect the environment, please recycle it.

Working Temperature and Humidity

Storage: Temperature: -40 degrees to 60 degrees; Humidity: 0% to 95%

Operation: Temperature: 0 degrees to 40 degrees; Humidity: 15% to 85%

Chapter 1 Introduction

IQBoard IT is our wireless interactive tablet that allows you to wirelessly interactive with your computer or interactive whiteboard. You can use the interactive digital pen to perform mouse functions, write notes, or control computer programs directly on the active area of the tablet. IQBoard IT has the following features:

Teach wherever you want

IQBoard IT is small enough to be held in hand easily. Teacher can interactive with computer or interactive whiteboard from anywhere in the classroom.

Involve every student

With IQBoard IT, teacher can assign one or more students to demonstrate or answer question directly from their seats. Multiple tablet users can write at the same time.

Save your work

IQBoard IT can save your work to editable file, from a single letter to the whole teaching process. Your extraordinary moment can become eternity.

Create digital art

IQBoard IT makes your computer your canvas, allowing you to unleash your digital creativity by simply touching the pen tip to the tablet.

Natural way to work

IQBoard IT gives you a supplement to keyboard input and helping reduce mouse-related stress on your hand and wrist. You can use IQBoard IT to handwrite notes, sign your name, or chat with your friends.

Chapter 2 Specifications





Specifications

Digitizing Technology	Electromagnetic, use battery-free digital pen to write and operate
Size	245mm × 235mm × 20mm
Active Area	6inch × 4inch
Weight	0.5kg (tablet + pen)
Pressure Sensitivity	1024 levels, can sense pressure from 7g-500g, the sensing range can be customized. Allow users to write with the pen leaned in any direction. The writing feel is as natural as writing with marker pen.
Resolution	4000LPI
Precision	±0.01mm
Responding rate	Signal tracking rate: 5m/s, Signal processing rate: 480 dot/s
Tablet Buttons	Provide Wake-up Button, Channel Switch Button, and 6 optional virtual hotkeys on tablet to achieve frequently used functions.
Pen Button	Right-click Button
Communication	Adopt 2.4G radio frequency for wireless connection within 25m (100m.without obstacle)
Power Supply	When connected with computer, the tablet obtains power from USB port. When not connected with computer, the tablet obtains power from lithium battery. The digital pen is battery-free.
Power Consumption	Suspend: 110uA × 3.7V, Idle: 12mA × 3.7V, Writing: 16.5mA × 3.7V
Battery Charging Time	6 hours
Battery Working Time	48 hours
Max Number of Devices per System	63
Anti-interference capability	Can resist any electromagnetic interference
Operating system	Windows 2000/XP/Vista X86
Software	IQBoard Software V4.X, IQBoard Resource Library.
Product certification	CE, FCC, ROHS
Company certification	ISO9001

Patents Possess all hardware patents and software intellectual property rights.

Warranty 3 years for main body (can be extended to 5 years upon registration), 1 year for other components. Click here to learn more.

Parts List

Name	Qty.	Picture
Tablet	1	 <p>1. Power Indicator, 2. Signal Indicator, 3. Virtual Hotkeys, 4. Work Area, 5. Battery Chamber, 6. Receiver Socket, 7. Channel Button, 8. Wake Up Button, 9. Reset Button, 10. Code Button</p>
Signal Receiver	1	
Digital Pen	1	
Lithium Battery	1	

Pen Stand	1	
--------------	---	---

Chapter 3 Connect IQBoard IT with Computer

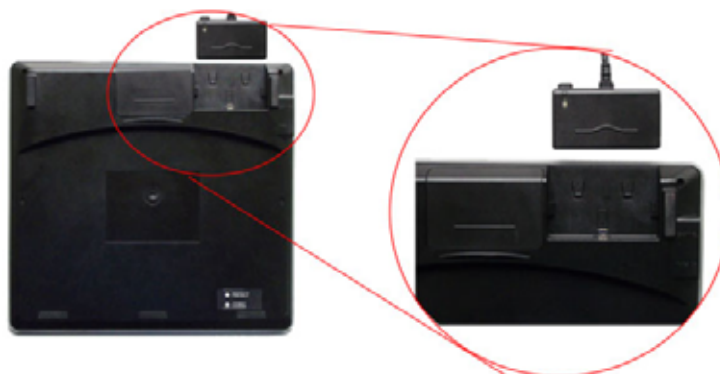
IQBoard IT uses Signal Receiver to communicate with your computer. You can connect IQBoard IT and your computer directly or wirelessly.

Connect IQBoard IT with computer directly

1. Insert the USB terminal of the Signal Receiver into a USB socket of your computer



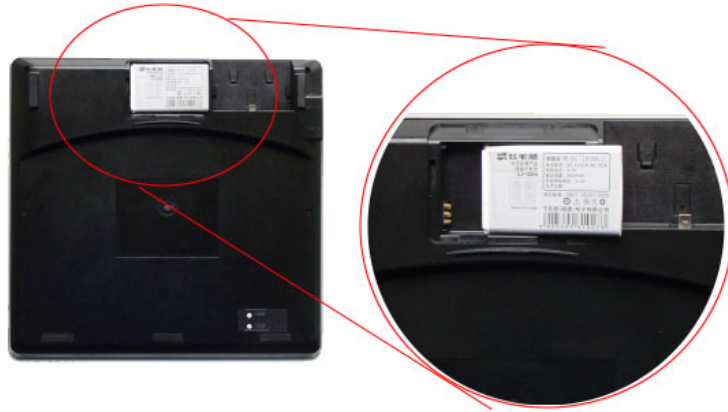
2. Insert the Signal Receiver into the receiver socket on the back of IQBoard IT.



3. If it is the first time you use IQBoard IT on your computer, you should [install the drivers](#). Then you can start using IQBoard IT.

Connect IQBoard IT with computer wirelessly

1. Open the battery chamber cover and insert the battery in the correct direction, as show in the picture below.



2. Close the battery chamber cover.



3. Insert the USB terminal of the Signal Receiver into a USB socket of your computer. You don't need to insert the Signal Receiver into the receiver socket of IQBoard IT.



4. If it is the first time you use IQBoard IT on your computer, you should [install the drivers](#) and [create wireless connection](#). Then you can start using IQBoard IT.

Chapter 4 Connect IQBoard IT with Projector

IQBoard IT can work with whiteboard, projector and LCD TV. In case you want to use projector, open the projector after connection, and adjust it to make its projection image within the projection area and centered. Then use the trapezoid rectification function of the projector to make the projection image quadrate.



Note: Please do not place the cable on the ground to avoid stumble. If you have to do so, please straighten and stick them on the ground with colored adhesive tape and wire.

Chapter 5 Install and Uninstall Drivers

Install drivers

Run “*IQBoard IT Drivers*” in the installation CD, and install the drivers according to the on-screen instructions. After the installing process is finished, please restart your computer.




Uninstall drivers

Select “*Start > Programs > IQBoard IT Drivers > Uninstall*” to uninstall drivers. You also can open Control Panel, select “*Add/Remove Programs*”, and in the list of currently installed Programs, select “*IQBoard IT Drivers*”, then press the “*Remove*” button to remove the driver and orientation program.

Chapter 6 Charge the Battery

IQBoard IT uses a rechargeable lithium battery as the wireless power source. You are advised to charge the battery completely before using IQBoard IT. Charging IQBoard IT is simple. You only need to connect IQBoard IT with your computer. IQBoard IT will take approximately 6 hours to charge.

If you have installed IQBoard IT drivers on your computer, when you connect IQBoard IT with your computer, the power indicator will show the battery status, as follows:

		
The 2 indicators are not lighting or flashing alternately	The red indicator is continuous lighting	The green indicator is continuous lighting
The battery is not installed	The battery is fully charged	The battery is charging

Chapter 7 Customize IQBoard IT

After you installed the IQBoard IT drivers on your computer, you can customize the way the pen or tablet works. This chapter describes how to create a wireless connection between IQBoard IT and your computer, and how to adjust your tablet and pen settings.

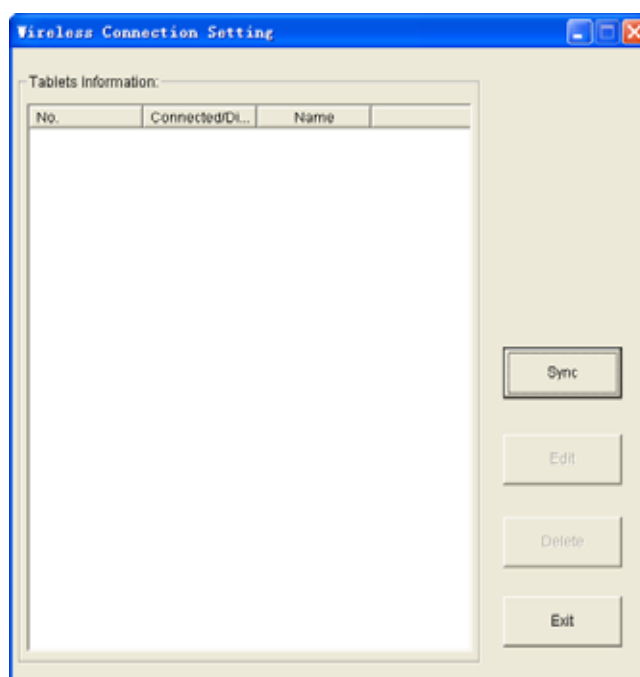
7.1 Launch setting program

1. Select “*Start > Programs > IQBoard IT Drivers > IQBoard IT*”, or double-click “*IQBoard IT*” on the desktop, the IQBoard IT taskbar icon appears.
2. Right-click the IQBoard IT taskbar icon, the setting menu appears.



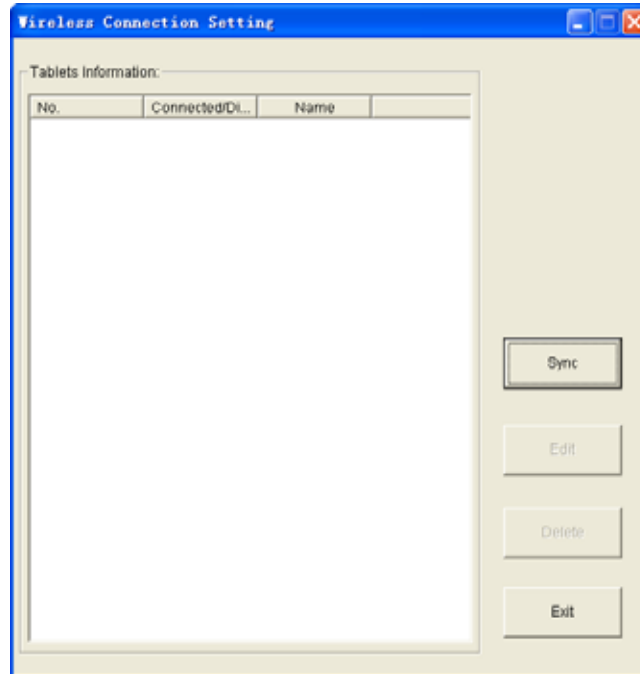
7.2 Wireless Connection Settings

Click “*Wireless Connection Settings*” on the taskbar icon menu to enter the setting window. Here you can adjust the wireless connection between IQBoard IT and your computer.



Add a wireless connection

1. If you want to connect one tablet with several signal receivers, you should click “Sync” first to prevent signal interference. Otherwise, you can skip this step.



2. Press and hold the button on signal receiver for 3 seconds, until the indicator on signal receiver flashes.



3. When the indicator on signal receiver is flashing, use the signal pen to press the “Code” button on the tablet back. Following Add Tablet window appears.



 **Prompt:**

- 1. The indicator will only flash for 15 seconds, please finish step 3 with this period. Otherwise, please redo from step 2.*
- 2. In case the battery is not installed or the tablet is in suspend status, the Add Table window will not appear. Please check the battery, and press the "Wake Up" button on the tablet left side or press the "Reset" button on the bottom right of the tablet back to reset the tablet. Then redo from step 2.*
- 3. When there is signal interference, the Add Table window may not appear. Please insert the Signal Receiver into the receiver socket on the back of IQBoard IT, and press the "Channel" button on the tablet left side to change the tablet channel. Then disconnect the signal receiver and tablet, and redo from step 2.*

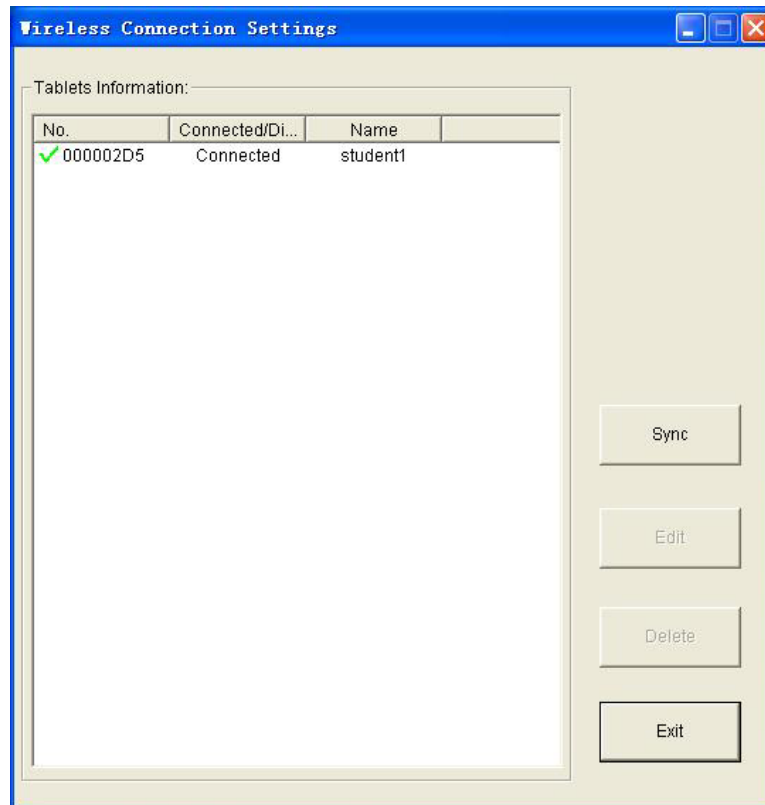
4. In the Add Table window, tick the "Connect" check box, and enter a name for the tablet, then click "Ok". This tablet will appear in the Tablet List. If you want to add other tablet, repeat the above steps.

 **Prompt:**

- 1. One signal receiver can connect up to 63 tablets.*
- 2. To prevent signal interference, please connect only one signal receiver to one computer.*

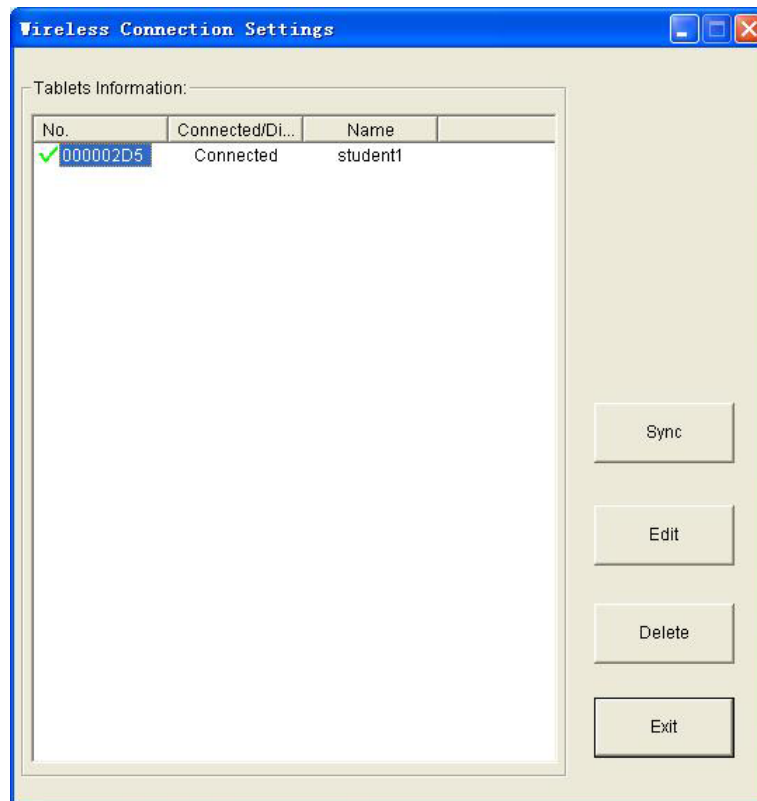
Change tablet properties

1. When the signal receiver is connected to your computer, select a tablet in the Tablet List
2. Click "Edit" button, and change the tablet name and connecting status.



Remove wireless connection between IQBoard IT and your computer

1. When the signal receiver is connected to your computer, select one or more tablets in the Tablet List
2. Click "Delete" button to remove wireless connection between these tablets and your computer, and delete these tablets from the Tablet List.

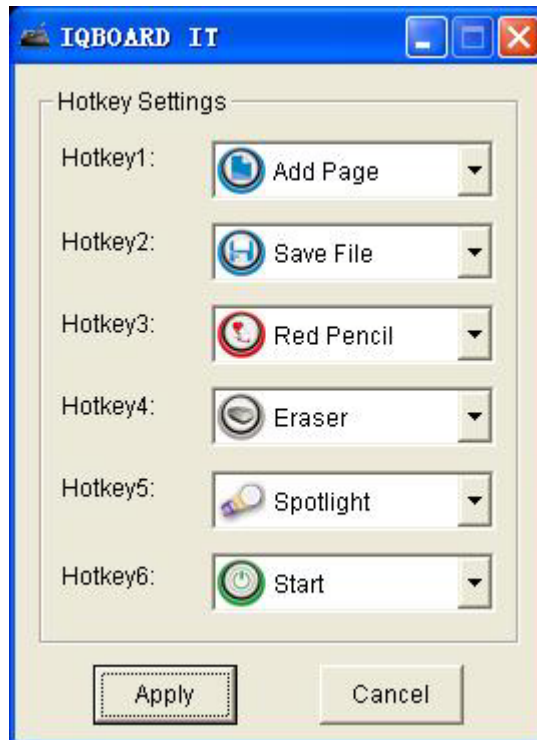


7.3 Hotkey settings

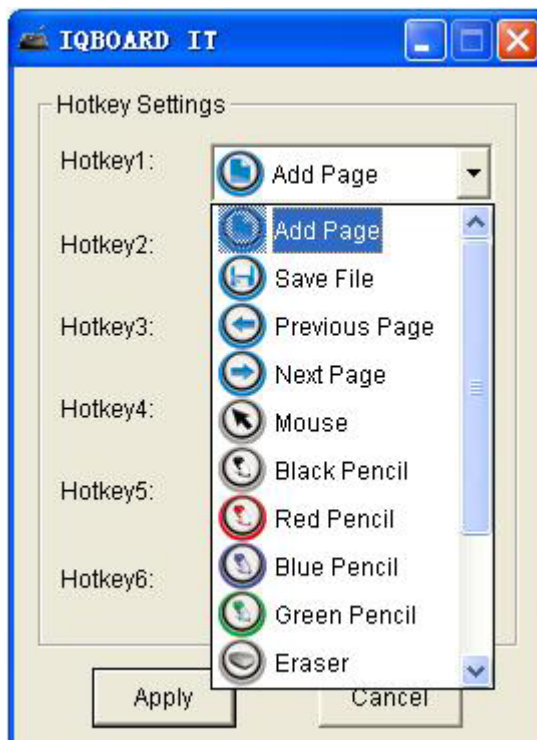
IQBoard IT has 6 hotkeys on the left side of Work Area to achieve some frequently used functions of IQBoard Software. The default functions of these hotkeys are: Add Page, Save File, Previous Page, Next Page, Mouse, Black Pencil, Red Pencil, Blue Pencil, Green Pencil, Eraser, Magnifier, Reveal Screen, Spotlight, and Start.

You also can customize the functions of these hotkeys. Operation steps are as follows:

1. Click "*Hotkey Settings*" on the taskbar icon menu. The Hotkey Settings window appears.



2. Select a function in the pull-down menu for each hotkey, and click “Apply”.



Following is the brief explanation of these functions.

Add Page: In Windows Mode, press this key to clear all annotations on screen. In Board Mode, Press this key to add a new page in current “cdf” file.

Save File: In Windows Mode, press this key to save all annotations on screen to a page in current file. In Board Mode, press this key to save the current “cdf” file.

Previous Page: Press this key to go to the previous page.

Next Page: Press this key to go to the next page.

Mouse: Press this key, you can use the digital pen to achieve mouse functions on tablet, such as click, double-click, and drag.

Black Pencil: Press this key, you can use Pencil tool to write on tablet in black color.

Red Pencil: Press this key, you can use Pencil tool to write on tablet in red color.

Blue Pencil: Press this key, you can use Pencil tool to write on tablet in blue color.

Green Pencil: Press this key, you can use Pencil tool to write on tablet in green color.

Eraser: Press this key, you can erase normal eraser to erase digital ink created by Freehand Drawing Tools.

Magnifier: Press this key to magnify areas of the screen.

Reveal Screen: Press this key to cover and reveal the information on your screen.

Spotlight: Press this key to draw attention to an area of the screen.

Start: Press this key to start the IQBoard Software.



Prompt:

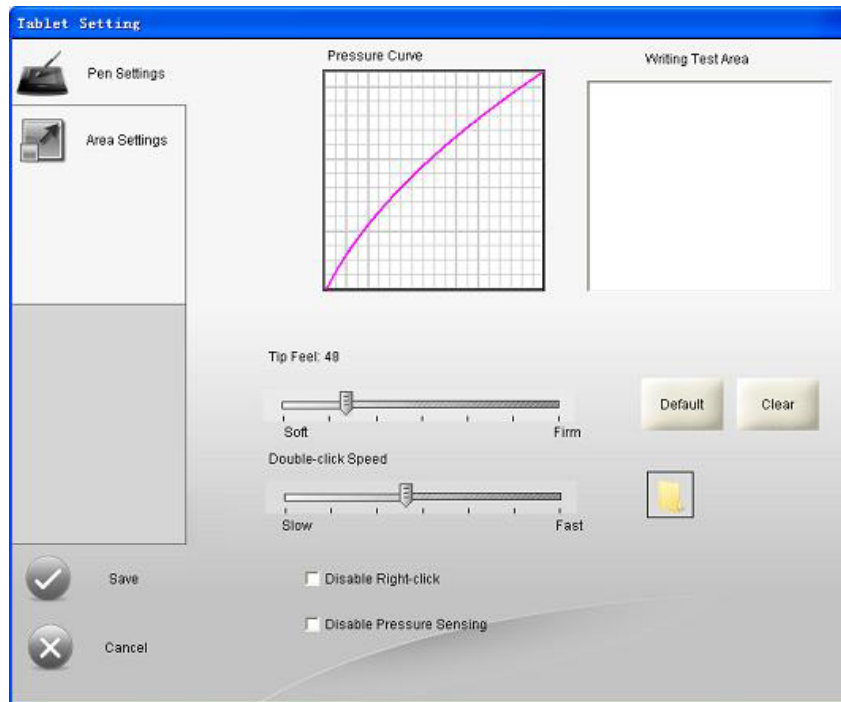
- 1. Except the “Start” key, all hotkeys are functional only after IQBoard Software is started.*
- 2. Please refer to the user manual of IQBoard Software for details of each function.*

7.4 System Settings

System Settings include Pen Settings and Area Settings. Here you can customize the Digital Pen and Work Area.

7.4.1 Pen Settings

To make the Digital Pen more comfortable to use, you can customize its tip feel, double-click speed, and right-click function.



Tip Feel

Move the Tip Feel slider to customize the amount of pressure needed to click or write, or ink.

After adjust the Tip Feel, you can try your writing in the Writing Test Area. Click *“Default”* to reset the Tip Feel to default value. Click *“Clear”* the clear the content in Writing Test Area.

Double-click Speed

Drag the Double-click speed slider to adjust how quickly you want to click. A larger setting makes double-clicking easier. Test the setting by double-clicking the folder icon.

Disable Right-click

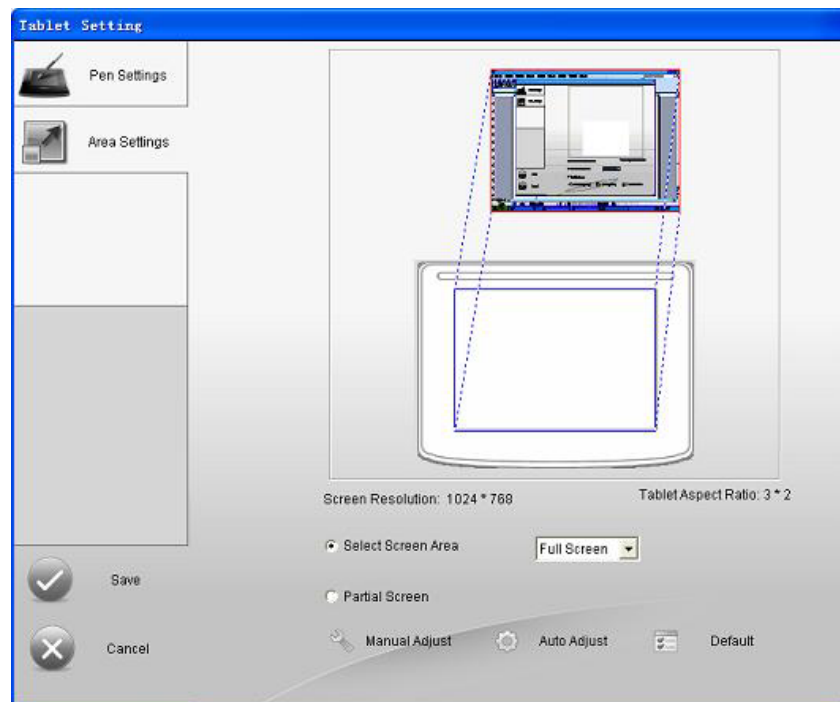
Tick the checkbox of *“Disable Right-click”* to disable the right-click function of the digital pen.

Disable Pressure Sensing

Tick the checkbox of *“Disable Pressure Sensing”* to disable the pressure sensing function of the digital pen.

7.4.2 Area Settings

The Area Settings options enable you to define the relationship between pen movement on the tablet surface and cursor movement on the screen. You can map the entire or partial Work Area of the tablet to the entire screen, or map the entire Work Area of the tablet to partial screen.



Map the entire Work Area to the entire screen

1. Select *'Entire Screen'*.
2. Select *"Auto Adjust"*.
3. Click *"Apply"*.

Map partial Work Area to the entire screen

1. Select *"Entire Screen"*.
2. Select *"Manual Adjust"*,
3. Drag borders of the Work Area to define the Work Area that will be mapped to your entire screen area.
3. Click *"Apply"*.

Map the entire Work Area of the tablet to partial screen.

1. Select "*Partial Screen*".
2. Click on screen to define the top left corner and the bottom right corner of the screen area that will be mapped to your tablet Work Area.
3. Click "OK".
4. Click "*Apply*".

Return settings to their factory defaults

1. Click "*Default*".
2. Click "*Apply*".

Chapter 8 Use IQBoard IT

8.1 Use Digital Pen

Single-click: Press the tablet Work Area with pen tip at proper strength.

Double-click: Press the tablet Work Area twice with pen tip at proper strength. Make sure you press at the same point.

Right-click: Lift the digital pen 1mm-1cm from the tablet, and press the side switch of the digital pen.

Move: Lift the digital pen 1mm-1cm from the tablet, and move the digital pen.

Drag: Use the digital pen to press an item, and slide the pen across the Work Area to drag the item to the desired position.

Write: When you are using IQBoard Software, you can use the drawing tools to directly write on the tablet Working Area. (The writing strength should be the same as using the normal pen.)

8.2 Use Hotkeys

Using Hotkeys is simple. Press the hotkeys with the digital pen, and the relevant functions will be activated. You can [customize the functions of these hotkeys](#).



Chapter 9 Troubleshooting

1. When operating and writing on the tablet, the system respond is slow, or the stroke is Intermittent.

1. The computer is not under normal running or the memory is occupied too much. Please close some applications or restart the computer.
2. The operating or writing force is uneven. Sometimes the force is too light to be sensed.

2. Under wireless connection, when you move the pen tip across the tablet Work Area, the pointer doesn't move on the display.

1. The battery runs out. Please recharge the battery.
2. The tablet is in suspend status. Please press the "Wake Up" button on the tablet left side or press the "Reset" button on the bottom right of the tablet back to reset the tablet.
3. The battery is not installed. Please install the battery.

3. When using IQBoard IT, the screen cursor jumps.

1. The digital pen is placed on the tablet Work Area, please move it away.
2. Two tablets are stacked together, please separate them.
3. There is interference source nearby, such as high voltage cable or large generator set which can generate strong magnetic field.

Background knowledge: IQBoard IT adopts working principle of electromagnetic induction. So if there is interference source that can generate strong magnetic field nearby, the above symptom will occur. In normal condition, devices like cell phone, display, TV won't affect IQBoard IT. In case the interfering magnetic field is too strong, you can move either the interference source or IQBoard IT to keep their distance over 50cm.

4. The pen tip worn out.

Common abrasion will not affect normal operation. When the pen tip is severely abraded, you can purchase it from local dealer.

5. Other questions, please consult our service center or local dealer.

Chapter 10 Maintenance

Tablet

Before cleaning the tablet, please disconnect the tablet with your computer. Please use soft cloth to clean the tablet.

Please do not use sharp or pointed objects to scratch the tablet.

During the usage, please do not knock the surface fiercely with the digital pen.

Please do not put the additional weight or pressure on the tablet.

Please do not bend the tablet.

Please do not use the tablet in dusty, foggy, wet and inclement environment. Keep it away from sharp object, heat source, corrosive chemicals, fire, and water. Please do not put the whiteboard in the outlet of hot air, otherwise the material will deteriorate and its life-span will be shortened.

Transport

Please handle with care, and do not put any weight on the surface so as to avoid the surface distortion and damage. Lay the whiteboard upright during the transportation or storage. In long distant transportation, it is suggested to repack the whiteboard with the original packing. If the original packing is unavailable, insert some protective padding between the components to protect them from intense vibration or crash. Avoid vibration, dampness, electricity, water and pressure in transportation.

Part Replacement

Please do not disassemble the whiteboard or modify its inner structure so as to prevent accident or trouble. For maintenance or part replacement, please resort to our authorized technician. Make sure that you use our designated part or the one with same specification when replacing.